

**1995**

**57 Foot Motor Yacht**

Effective Date - June 15, 1994

## SPECIFICATIONS

Approximate Dry Weight .....	58,000 lbs .....	26,364 kg
Beam .....	17' 3" .....	5.26 m
Cabin Headroom .....	6' 4" .....	1.93 m
Cockpit Area .....	125 sq ft .....	11.3 sq m
Draft .....	42" .....	1.07 m
Freeboard Aft .....	75" .....	1.91 m
Fuel Capacity .....	1200 Gal .....	4,656 l
Holding Tank Capacity .....	120 Gal .....	454 l
L.O.A. w/ Pulpit .....	63' 7" .....	19.47 m
L.O.A. w/o Pulpit .....	57' 0" .....	17.37 m
Sleeping Accommodation .....		6 to 8
Top of Arch Height Above Waterline .....	16' 3" .....	4.95 m
Top of Windshield Height Above Waterline .....	13' 10" .....	4.22 m
Water Capacity .....	280 Gal .....	1,060 l

## STANDARD EQUIPMENT

### HULL DECK & FLYBRIDGE

- TOLLYCRAFT Yacht's 15-year transferable warranty on hull
- AM/FM Compact Disc Stereo w/Speakers
- Anchor Windlass w/300' Chain (power up and down), w/controls at Bow, Bridge, and Pilothouse
- Blue Gel coated exterior Feature Stripes
- Bow and Stern Pennant/Flag Staffs
- Bronze underwater Thruhull Fittings and Seacocks
- Common Drain System for Decks, Sinks, and Showers
- Constructed with Gel coat outer layer, anti-blister water barrier layer, and hand-laid fiberglass with a special blended premium resin.
- Deck Cleats - 2 Bow, 2 Stern, 2 Midships, 4 Springline
- Dinghy Davit, 12 Volt, 1500 lb. capacity
- Fiberglass Bow Pulpit w/roller
- Full Instrumentation
- Helm Seats (2)
- Hydraulic Steering
- Ladder, Cockpit to Bridge
- "L" Lounge Seat w/storage
- MMC Electronic Engine Controls
- Radar Arch
- Rudder Angle Indicator
- Sun Lounge Pads
- Tinted Plexiglass Windscreen
- 110 Volt Electrical Outlet w/G.F.I.

- 1 1/4", one-piece welded, Stainless Steel Rails

### INSTRUMENTATION, EQUIPMENT & SAFETY

- Acoustical and thermal Insulation
- Air Conditioning w/reverse-cycle heat
- Air Horn, Dual-Trumpet
- Alarm System, audio & visual, temperature, and oil pressure
- Batteries, 75 amp-hour, (10)
- Battery Charger
- Battery Isolator
- Battery Paralleling System
- Battery Switch
- Bilge Pumps (5)
- Central Vacuum System
- Docking Lines (4)
- Dockside Pressure Water Inlet (2)
- Electrolysis Bonding System
- Engine-hour Meters
- Engine Room Instrument Panels
- External Sea Strainers
- Fenders (4)
- Fire Extinguishers, hand-held, (8)
- Fire Extinguisher System - automatic/manual
- Fuel/Water Separators
- Generator, 20 KW, w/sound shield
- Generator, 8 KW, w/sound shield
- High-Water Alarms

- MMC Synchronizers
- Oil Change System
- Oil Cooled Shaft Logs
- Owner's Manual
- Seven-Station Phone/Intercom System
- Spare Shaft Stowage Tube
- Tinted Tempered Glass Windows
- Transom Swim Platform w/ladder
- Trim Tabs
- Twin Diesel Engines, FWC
- Washdown Pump; raw water fwd, fresh water aft
- Washer/Dryer in companionway
- Water Heater, 120 Volt, w/Engine Heat Exchanger
- Weathercovers; Bridge Seating, Control Station, and Cabin Windshield

## **SALON**

- Accent Pillows (10)
- Carpeting (Berber Woven Style)
- Curved Sofa on Wide Body Model, "L-Shaped" Sofa on Walkaround Model
- "Gibraltar" solid-surface Countertops
- Mini-blinds
- Recessed Lighting
- Sliding Entry Door, aft
- Sliding Windows w/screen
- TV, VCR, 110 Volt Stereo w/Cassette & CD Player
- Wet Bar
- Wood Paneling
- Wood Valances

## **PILOTHOUSE, GALLEY, & DINETTE**

- Accent Pillows (6)
- Carpeting, Pilothouse Sole
- Chart Drawer
- Cutting Board
- Dinette, U-shape
- Dishwasher
- "Gibraltar" solid-surface Countertops
- Lower Control Station
- Insta-Hot Water Dispenser
- Microwave Oven, w/light and fan

- Mini-blinds
- Range, 4 burner w/ oven
- Refrigerator w/freezer, 120 Volt
- Sliding Door to Starboard Sidedeck, w/screen
- Sliding Windows w/screens
- Stainless Steel Double Sink w/single-lever faucet
- Storage Cabinets and Drawers
- Trash Compactor
- Windshield Wipers, Washers and Defoggers
- Wood Flooring (Galley and Dinette)
- Wood Paneling

## **MASTER STATEROOM**

- Accent Throw Pillows (3)
- Carpeting (Berber Woven Style)
- Cedar Lined Hanging Lockers
- Chest of Drawers
- Draperies
- "Gibraltar" solid-surface Countertops
- Mirrors
- Nightstands (2)
- Portlights w/ screens
- Queen Berth
- Quilted Bedspread and Pillow Shams
- Reading Lights
- TV w/VCR
- Wood Privacy Door

## **MASTER HEAD**

- Exhaust Fan
- "Gibraltar" solid-surface Countertops
- Linen Closet
- Mirrored Ceiling
- Portlight w/screen
- Shower Stall
- Temperature regulated Shower System
- Towel Bar, Paper Holder, and Soap Dish
- Twin Sinks
- Vacu-flush Head w/holding tank
- Wood Flooring

### **GUEST STATEROOM (Bow)**

- Accent Throw Pillows (3)
- Cable TV Receptacle
- Carpeting (Berber Woven Style)
- Cedar Lined Hanging Locker
- Chain Locker in Forepeak w/mirrored door
- Chest of Drawers, under Berth
- Deck Hatch w/screen
- "Gibraltar" solid-surface Countertops
- Mirrors
- Queen Berth (raised)
- Quilted Bedspread and Pillow Shams
- Reading Lights
- Wood Privacy Doors (2)

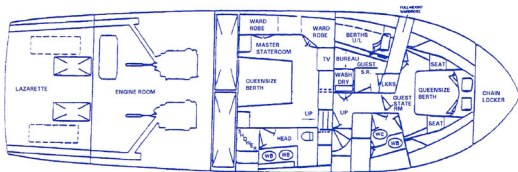
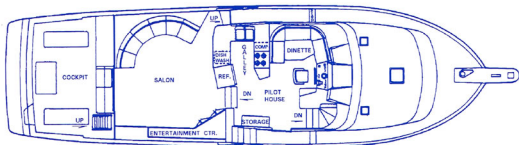
### **GUEST HEAD**

- Access from Companionway and Forward Stateroom
- Deck Hatch w/screen
- Exhaust Fan
- "Gibraltar" solid-surface Countertops
- Linen Locker

- Mirrored Ceiling
- Shower Stall
- Temperature regulated Shower System
- Towel Bar, Paper Holder, and Soap Dish
- Vacu-flush Head w/holding tank
- Wood Flooring

### **MID GUEST STATEROOM (PORT)**

- Accent Pillows (2)
- Cable TV Receptacle
- Carpeting (Berber Woven Style)
- Cedar Lined Hanging Lockers
- Deck Hatch w/screen
- Draperies
- "Gibraltar" solid-surface Countertops
- Mirrors
- Portlights w/screen
- Quilted Bedspreads and Pillow shams
- Reading Lights
- Twin Berths (upper and lower)
- Wood Privacy Door



## OPTIONS

### ENGINE GROUP

* Twin 735 HP 8V92TA D. D. (FWC)	\$ 1,048,902.
* Twin 680 HP M.A.N. (FWC)	1,048,902.
* Twin 820 HP M.A.N. (FWC)	1,114,512.

### DESIGNER INTERIOR (Standard)

#### Color Selections

- \* American Traditional
  - \* Lush Pastel
  - \* Manhattan Contemporary
  - \* Safari
  - \* Tropical Heat
- 
- \* Teak Interior Woodwork
  - \* White Ash Interior Woodwork

### LAYOUT OPTIONS

* 57 w/Walkaround Sidedecks	N/C
* 57 w/ Wide Body, Main Salon	N/C

### MECHANICAL OPTIONS

* A-2 Bow Thruster	20,820.
* A-10 120 V Exterior Outlets, GFI (each)	270.
* A-13 Glendening Cablemaster, Cockpit	11,133.
* A-20 Diesel Furnace, Espar (in lieu of Reverse-Cycle Air Conditioning)	N/C
* A-29 Upgrade Auxiliary Gen-Set to 12.5 KW	6,100.
* A-31 Spare Propellers (2)	4,480.
* A-34 Spare Propeller Shaft	3,667.
* A-46 Trolling Valves, w/MMC Controls	4,000.

### EXTERIOR OPTIONS

* B-9 Teak Caprail, Cockpit and Salon Sides	2,033.
---	--------

* B-11 Cockpit Entry Steps	413.
* B-12 Teak Cockpit Sole	8,400.
* B-13 Baitcenter Cabinet	10,246.
* B-14 Live Baitwell in B-13 Cabinet	1,244.
* B-15 Freezer in B-13 Cabinet	1,480.
* B-17 Refrigerator in B-13 Cabinet	1,480.
* B-25 Cockpit Controls in B-13 Cabinet	2,413.
* B-44 Halogen Searchlight, w/Dual-Station Remote Control	2,377.
* B-47 Trash Compactor in B-13 Cabinet	1,620.
* B-49 Wetbar w/Icemaker, Bridge	6,020.
* B-50 Wetbar w/Refrigerator, Bridge	6,020.

### INTERIOR OPTIONS

* C-13 AM/FM Cassette Stereo (specify Stateroom)	2,093.
* C-14 AM/FM Compact Disc Stereo (specify Stateroom)	2,500.
* C-16 Barrel Chair, upholstered	1,313.
* C-33 Overhead Handrail, Pilothouse	300.
* C-34 120 V Heater (specify Cabin) (each)	393.
* C-37 Hi-Lo Cocktail/Dining Table	1,880.
* 3C-40 Icemaker, Main Salon	1,533.
* C-45 Pilothouse Helm Seat	1,533.
* C-60 Watermaker	10,447.

### MISCELLANEOUS

* E-1 Commissioning, Dealer Location	7,867.
* E-19 Install Customer-Supplied Transducer	567.
* E-21 Install Customer Supplied Radar Cable	567.
* E-30 Commissioning, Port of Kalama, WA	5600.

TOTAL PRICE W/OPTIONS \$ \_\_\_\_\_

All prices apply only if order is placed prior to Yacht going into production. Prices are for STANDARD INSTALLATION ONLY. CUSTOM WORK is extra cost. TOLLYCRAFT reserves the right to make changes in EQUIPMENT or SPECIFICATIONS without notice.



2200 Clinton Avenue  
Kelso, WA 98626  
(206) 423-5160