

*Follycraft*



# The Heritage Of Craftsmanship

In 1936, when R. M. Tollefson launched his first wooden cruiser no one could have imagined that his favorite pastime (cruising) would thrust him to the forefront of the yachting community as a premier manufacturer.

Tollefson's business career began in the early 1930's as the owner of a small manufacturing operation, Central Lumber Co., producing fine furniture and cabinetry. As an adjunct to his normal business, Tollefson produced several custom yachts for friends and himself.

As the reputation of his boat building talents spread, Tollefson began building more boats than cabinets or furniture. Eventually, this demand allowed him to direct his attentions solely to building boats. It was a natural change of direction. With a dedicated group of proficient cabinet makers and his own expert knowledge of yacht design, Tollefson launched a complete line of wooden cruisers.

During the next several years, Tollefson developed a close personal relationship with noted Naval Architect Ed Monk Sr., and later with his son, R.E. "Ed" Monk Jr.. Utilizing their combined talents, they generated a continuing supply of innovative designs which were then built by Tollefson.

For more than fifty years, "Tolly" Tollefson, as he is known throughout the boating industry, actively designed and built timeless pleasure



*Tollycraft is proud of its tradition. Featured above, a vintage 61' Tollycraft running side-by-side with a current 61' Pilothouse Motor Yacht.*

cruisers and yachts to meet the needs of true cruising enthusiasts. Tollefson's understanding of the demands of extended voyages came from personal experiences on the water cruising the yachts which bear his name. Gathering input from fellow boaters, Tollefson incorporated many comments and suggestions into new or existing models.

"Listen to your customers, give them what they want and don't compromise your standards," Tollefson often said. There is little wonder why each and every Tollycraft built today reflects this same philosophy.

In 1987, Tollefson decided it was time to take a more relaxed role in the marine industry, selling the company he founded and directed for more than fifty years. Today, he serves as Chairman Emeritus of Tollycraft Yachts Corp., cruising his personal 48' Tollycraft Motor Yacht.

Tolly's stately photograph still hangs on the wall of the reception area at the offices of Tollycraft

Yachts Corp. and his nickname appears on every Tollycraft produced.

Most importantly the company has an ongoing commitment to product excellence and customer satisfaction passed on by this master craftsman and cruising enthusiast.



*President & CEO, Randall K. Bogrand, at the helm of Tollycraft Yachts Corp. today.*



*Tolly greets fellow boaters at Port Ludlow Tollycraft Rendezvous*

# Building Cruising Yachts From The Water Up

Because Tollycraft owners are a restless breed who tolerate neither endless dockside parties nor constant maintenance problems, every system and detail is planned and built for a yacht that will always be on the go.

From the time the hull is laid until the final bit of upholstery is in place, Tollycraft's focus is on how well each component fits on its own, as well as a part of the whole. Tollycraft engineers build a

cruising scenario for each model, then test every new idea against our cruising background. Our experience tells us what is practical and what is fantasy.



## It Starts With Integrity

Bright new ideas and dazzling designs are worth little if they do not stand up to the structural, mechanical and electrical integrity that is the foundation for Tollycraft cruising yachts.

Tollycraft's integrity gives the owner justifiable confidence in his vessel. Fifty-seven years of building cruising yachts has taught us it takes more than words to instill confidence in a skipper who invests his money and the safety of his crew in a boat.

Tollycrafts have been known for years as tough sea yachts because everyday cruising takes a Tolly into waters that test a hull incessantly. But, Tollycraft learned long ago that it takes more than a tough hull to survive tough sea conditions.

So, there are "reality-based" reasons for totally encapsulating every stringer into place, fiberglassing every bulkhead to the hull, gluing and screwing every wood component together and capturing wiring and plumbing

every few inches.

Dry rot, once the bane of wooden boats, still attacks modern yachts if precautions are not taken. For this reason, Tollycraft uses premium straight grained mahogany for deck, cabinet and bulkhead framing. This rot-resistant wood is then treated with a preservative where it might be exposed to bilge water.



Engines, generators, and other mechanical equipment are installed for the long haul, with special strengthening given to areas of extra stress such as rudder posts and shaft logs. The entire mechanical structure is electrically bonded with a heavy copper strap that employs a shaft sweep to make positive electrical contact to external metal parts.

For strength and waterproofing, the hull, deck and cabin structures are bonded and screwed through

overlapping fiberglass.

Specially designed window frames overlap their cabinside openings so leaking is virtually eliminated.

Decks are cored with vertical grain balsa for stiffening and to eliminate any feeling of resilience underfoot. Even shower stalls are laid up of heavy fiberglass so they



don't creak or bend when used by a normal sized adult.

Integrity. It's much more than a slogan at Tollycraft. It is the foundation of our owner's confidence in our vessels.



# The Quadra Lift™ Hull...It Really Performs

Editors of boating magazines have been exposed to every claim about hull design that the marine industry can dream up. Naturally they are skeptical while sea trialing any new hull. However, almost without exception, editors who have tested Tollycrafts have reported that the Quadra Lift™ hull works.



*Stem view of Tollycraft's Quadra Lift™ hull*

Naval Architect Ed Monk Jr., who designed the original Quadra Lift™ hull for the Tollycraft 61' Motor Yacht, won't call his design "revolutionary," but rather the "latest in hull technology...the culmination of everything we've learned about hulls over the years."

While the Quadra Lift™ varies from model to model, its cupped dual chine separates this hull from others. With the waterline midway between the two chines, the Quadra Lift™ acts as an effective spray knocker, throwing spray horizontally away from the hull. Deflecting the spray not only delivers a dry ride, but increases efficiency by reducing the amount of wetted surface (drag) along the hull.

The design of the Quadra Lift™ provides extra buoyancy at the

bow, permitting a finer entry and reducing the tendency to broach in a following sea. In a chop, or at anchor, the Quadra Lift™ has a roll dampening effect, and with this extra stability comes extra comfort.

But the most dramatic demonstration of this remarkable hull comes when you ease the throttles forward and feel your Tollycraft rise effortlessly onto plane and handle smoothly at any speed. A nearly full-length keel aids the tracking through turns and gives you excellent control during slow-speed maneuvering.



## Intelligent Engineering

Great strides have been made in controls, steering, engines and gears. While Tollycraft exercises due caution in adopting new systems until they are thoroughly tested and proven, the most reliable of these are now offered on all Tollys.



State of the art components such as MMC electronic controls, custom AC/DC electrical panels and switches, Hynautic hydraulic

steering, fuel distribution manifolds and oil lubricated shaft stuffing boxes are but a few of the advanced systems offered.

Modern systems are of little benefit, however, if they are improperly integrated into the complete yacht. That's why Tollycraft engineers are careful to match technology with function.

Critical components, such as

engines and gensets are matched to the specific needs of each vessel and each owner. Engine selections include MTU, Caterpillar, Cummins, Detroit Diesel, and Volvo products.



*Fuel distribution manifold*



*MMC electronic controls*



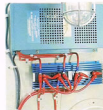
*Hynautic hydraulic steering*

Intelligent engineering...it's standard equipment on every Tollycraft produced.

# Engineering Details Make A Difference



Oil change pump system



Battery isolator



Backing hardware



Bronze seacocks



Shaft storage tube

No one person is smart enough to think of everything a boat should have to become a true cruising yacht. For this reason, we strongly rely on the experience of our dealers, our customers and our own 50 years of building cruising yachts. Features shown here are a sample of the extensive standard equipment lists for each Tollycraft and represent some of the items we consider extremely important for cruising.

**Heavy-Duty Alternators** – If you're not going to spend all your time at the dock and on shore power, your batteries need charging underway. Tollycraft uses heavy-duty alternators to bring batteries up to full charge quickly, even on short runs between anchoring.

**Oil Change Pump System** – Standard on all propulsion engines and available for gensets, this system simplifies the process of changing oil to the mere flip of a switch. You can change oil during a long cruise or at your home port without the mess of dipstick tube pumps and other such ineffective methods. The drain hoses for the pumps are capped and can be hung up to avoid dripping.

**Battery Isolator** – Battery uses are greatly reduced because each battery gets only the charge it needs - no more, no less - while you're running. Standard equipment battery chargers have built-in isolators for charging by generator or shore power.

**Extra-Strength Ladders** – Even though Tollycraft uses 1-inch stainless steel for rails and stanchions, the strength of boarding and bridge ladders is critical. So double tubing - 7/8-inch inside of 1-inch - is used to make all ladders.

**Superior Electrolysis Bonding System** – Electrolysis can be more of a problem to the cruising yacht than one that stays in a known moorage. Every Tollycraft is built with a heavy-duty bonding system that electrically links all metal components, internal and external. A shaft sweep bonds the propeller shafts to other components.

**Balanced And Lapped Propellers** – Like automobile tires, boat propellers are not perfect right out of the box, but need balancing if they are to run true. Tollycraft balances props before they're fitted to the shaft, then they're lapped to make sure the shaft and wheel make 90 percent contact. This is another way Tollycraft assures smooth running on your cruise.

**Backing With Backup** – Somewhere in your cruising experience you may damage a stanchion, bend a cleat or decide to make a change in deck hardware. All such hardware on every Tollycraft is through-bolted onto the deck with "propeller nuts." These ingenious bits of hardware are attached to the underside of the deck with three stainless steel screws that keep the nut in place even when the bolt is removed from above.

**Common Drains** – Every through-hull you eliminate is one less potential source of a problem, so Tollycraft uses a common drain system for all sink, tub, shower, wet bar and toilet drains, as well as bilge and cockpit drains, emptying all waste water into PVC tubes leading overboard at the stern.

**Bronze Seacocks You Can Reach** – Bronze, ball valve seacocks are used on all through-hulls, and, almost as important, Tollycraft makes sure you have easy access to every one.

**Sea Strainers For All Intakes** – Tollycraft learned many years back that a nasty phenomenon called eel grass could stop up an engine's cooling system very quickly in Northwest waters. Sea strainers are therefore standard on all models, and they're included even on intakes for raw water washdown pumps.

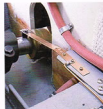
**Where To Put Your Spare Shaft** – People who do a lot of cruising usually carry a spare shaft because if you bend one, the right shaft is typically impossible to find on short notice. Instead of carrying the shaft in your bilges, Tollycraft provides a shaft storage tube with access from the transom on models from 34' to 61'.

**Keeping The Decibels Down** – While weekend boaters may like the "throaty roar of high-performance engines," Tollycraft makes every effort to keep engine and genset sound levels as low as possible. Engine compartments are insulated from living compartments with thick composite insulation that sandwiches a leaded sound barrier between two layers of foam.

**Smooth On The Inside** – Okay, there are times when you'll have to crawl around in the engine room or the bilges, even in a Tollycraft. But in a Tolly, these areas are not dooby-trapped with shards of unfinished fiberglass that can tear clothing or even draw blood. All interior surfaces are ground smooth to make getting into the bilge almost a pleasure.



Extra-strength ladders



Electrolysis bonding system



Common drains



Sea strainers



Engine room insulation

# Contemporary Styling...With Tollycraft Quality

Any seasoned yachtsman will tell you that a vessel's exterior design is critical to its ability to effectively interact with changing marine environments. Tollycraft recognized this long ago and has thoughtfully designed their products to be both visually appealing and functionally accommodating.

The distinctive Tolly profiles are timeless and turn heads in every marina. Contemporary designs such as the 53', 57' and new 55' Motor Yachts offer a sleek, "Euro" look and capture the fancy of the young at heart.

Other models, like the 48', 61', and new 65' Motor Yachts boast

traditional lines and subtly reflect the rugged Northwest heritage from which Tollycraft evolved.

## Details of Design

Tollycraft recognized long ago that once their owners were satisfied with a vessel's overall exterior appeal they began to examine the details. Today's





# Form, Fit And Function...A Tollycraft Tradition

Tollycrafts are a testimony to the company's firm commitment to design excellence.

Decks, bridges and cockpits are surfaced with sure footed non-skid and provide safe passage while aboard. Premium stainless steel handrails are meticulously welded and provide a stable hold in any

sea condition. Ladders to and from exterior areas are custom designed by Tollycraft. They feature wide grooved teak treads and sturdy double wall stainless steel rails. Molded exterior features have become a Tollycraft trademark. Bow pulpits, steps, and stowage lockers have been "pre-engineered" into the

product. With Tollycraft you won't find poorly fitted "add on's".

Additional cruising options such as bait/tackle centers, masts, cockpit controls and dinghy davits are thoughtfully integrated into the vessel's exterior layout for safe and simple operation.



4



5



6



7



8



9

## Photo Identification Key

1. 57' Cockpit Motor Yacht
2. 53' Motor Yacht
3. 44' Cockpit Motor Yacht
4. Boarding, 61' Motor Yacht
5. Welded stainless steel rails
6. Cockpit, 34' Sport Sedan
7. 61' Motor Yacht
8. Molded steps with heavy non-skid tread
9. From left to right, 30' Sport Cruiser, 34' Sport Sedan & 40' Sport Sedan
10. 48' Cockpit Motor Yacht



10

# A New Era In Cruising Accommodations

Naval architects, marine engineers and designers have always worked out the accommodations of a yacht on the drawing board, then transferred their ideas to a wooden "plug" and then to a finished boat. At Tollycraft, the ideas and designs of these professionals have always been taken one long step further. For years, "Tolly" tested every new model offered, by living and cruising aboard her.

This philosophy of building

"cruisable" yachts persists at Tollycraft today, with a vast resource of cruising experience going into every new design. Tollycraft designers are relentless in striving to address the needs of those who truly use their boats. They are constantly devising better ways to utilize space, while still offering more of the amenities today's boaters demand.

Decor schemes are fresh, contemporary and remain pleasing even on a long cruise. (Note the

layout and interior features illustrated on the following pages.) It's Tollycraft's goal to provide the maximum usable space available for each model without the gimmickry that might sacrifice structural integrity, stability or safety.

Tolly's signature woodwork exudes a comfortable warmth to salon and galley areas and is finished to the degree of fine furniture. Select teak, ash and oak veneers are offered, providing



1



2



3



4



5



6



7



# Elegant Interiors That Are Warm And Inviting

owners a pleasing array of wood grain and color. Below decks are tastefully appointed with lighter color schemes which eliminate any feeling of being closed in. And recognizing that decorating is a very personal decision, Tollycraft offers a wide selection of premium decor groups, helping to create the perfect "look" for you. A totally custom decor option is also available on the larger yachts, which truly lets you design a one of a kind interior.



8



9



10



11



12



13



14



15



16

## Photo Identification Key

1. Salon, 61' MY
2. Master stateroom, 57' MY
3. Salon entertainment center 53' MY
4. Salon, 44' MY
5. Electrical panels, 61' MY
6. Pilothouse helm, 61' MY
7. Salon/galley, 34' SS
8. Salon, 48' MY
9. Dinette, 53' MY
10. Galley/dinette, 44' MY
11. Salon, 57' MY
12. Master stateroom, 61' MY
13. Salon, entertainment center 40' SS
14. Galley, 53' MY
15. Entertainment center, 44' MY
16. Galley, 61' MY

# Tollycraft Meets, Exceeds & Sets Standards

U.S. Coast Guard minimum standards for safety in yacht construction are only the beginning at Tollycraft. Participating in the voluntary National Marine Manufacturers Association (NMMA) Certification Program, Tollycraft submits each model to an inspection process to make sure we comply with established product standards and safety regulations.

The inspection process checks equipment and assures compliance with applicable American Boat & Yacht Council (ABYC) standards, all of which exceed Coast Guard requirements for fuel systems and

ventilation, AC and DC electrical systems for gasoline and diesel powered yachts, steering, bilge pumps and auxiliary equipment.

## Double Quality Control

Tollycraft is extremely concerned about consistent quality of the entire yacht as well as every system and sub-system inside. For this reason, we have established an overlapping system of quality control.

First, each department has inspectors who check all work done and equipment installed within that department. Then, as the yacht is completely assembled, an independent

inspector checks all systems to make sure each works as specified by itself and also as part of the entire functioning yacht.

Tollycraft is known among its dealers as the manufacturer whose boats require the least amount of dealer preparation, and this translates into faster and better delivery to the owner.



## Owner Manuals That Are Helpful

Tollycraft's new owner manual could easily be on a best seller list and is sure to become some of your favorite reading. Tollycraft has spared no expense in producing one of the most complete, easy to read manuals in the industry.

This personalized manual has information on all of the equipment on your yacht, including both standard and optional items. It has a complete explanation of all electrical, mechanical, propulsion and plumbing systems. Also included is space for the owner's notes and records, plus a report form so you can tell us how to improve the manual.

### A Manual Inside A Manual

A separate engine manual prepared for the specific propulsion system on your yacht, along with manuals for electrical and mechanical equipment supplied by their manufacturers are contained in a handy nylon carry bag. Tollycraft tops your

"reference library" with a copy of *The Complete Book Of Boating*.



## Ongoing Commitment To Customer Satisfaction

Tollycraft's commitment to customer service extends through every facet of their business. Employees, management and dealers are joined in an effort to attain 100% customer satisfaction, 100% of the time.

It's called the "Team Tolly" concept. The recently introduced Yacht Electrician Apprenticeship

Program is a good example of Tolly's continuing efforts. Developed by Tollycraft, the program is the first State approved yacht electrician program in the nation and will help set quality and installation guidelines for the entire industry.



## On The Horizon

Tollycraft is expanding in many directions, with new models, new methods and new dealer locations.

With several new models on the drawing board, Tollycraft is poised to continue its tradition of producing yachts aimed at the serious cruising enthusiast.

It takes much more than a well conceived design to satisfy Tolly customers. That's why Tollycraft continuously examines technological advances in materials and construction techniques, incorporating beneficial items into each design.

New fiberglass materials, resins, coatings, component systems and molding techniques all play important

roles in providing stronger, lighter and more space efficient products.

More and more, computers are aiding in the design and manufacture of Tollycraft products. New technology will speed the introduction of future models and enhance production efficiency.

Tollycraft dealers are our partners in successfully bringing yachts to their new owners in the precise configuration ordered. Strategically located to offer service to all major yacht markets, Tollycraft dealers are extremely knowledgeable and experienced, as such, they are your solid link to the factory in all matters pertaining to the purchase,

construction and delivery of your new yacht.



*Tollycraft's new "IBM Office Option"*



*The new 55' Pilothouse Motor Yacht (above) scheduled for completion in August 1992 and the 65' Pilothouse Motor Yacht (right) due to launch in Spring of 1992*



## Visit Tollycraft For A Plant Tour

If you would like to tour our manufacturing facility please contact your dealer to set up an appointment. The plant is located in Kelso, Washington off I-5, 45 miles north of Portland, Oregon and

130 miles south of Seattle, Washington.

If you fly, the Kelso Municipal Airport is right next door to the plant and is rated for 30,000 pounds. If you're cruising up the Columbia River, the Port Of Kalama has a guest dock just a few miles up stream from the plant.

Tollycraft is proud of the products they produce and encourage Tolly owners, interested boaters, and potential customers to tour the plant. Once you have had the opportunity to view the construction process, you will better recognize the differences that make a Tollycraft yacht the finest built today.



# Tollycraft's Worldwide Servicing Dealer Network



## Organized Marine Industry Affiliations

**Tollycraft Yachts Corp. proudly supports the following marine industry organizations:**

American Boat & Yacht Council  
Marine Retailers Association Of America  
Northern California Marine Association

National Marine Manufacturers Association  
Northwest Marine Trade Association  
Southern California Marine Association

**\*Note:** This brochure shows yachts which include optional equipment. Equipment specifications contained in this brochure are based on the latest production information available at time of publication. Tollycraft reserves the right to make changes in prices, equipment, specifications, colors, materials and models at any time without notice.



2200 Clinton Avenue • Kelso, Washington • U.S.A. • 98626  
Telephone (800) 536-5160 • Fax (206) 423-2607



# Contemporary Styling...With Tollycraft Quality

Any seasoned yachtsman will tell you that a vessel's exterior design is critical to its ability to effectively interact with changing marine environments. Tollycraft recognized this long ago and has thoughtfully designed their products to be both visually appealing and functionally accommodating.

The distinctive Tolly profiles are timeless and turn heads in every marina. Contemporary designs such as the 53', 57', and new 55' Motor Yachts offer a sleek, "Euro" look and capture the fancy of the young at heart.

Other models, like the 48', 61', and new 65' Motor Yachts boast

traditional lines and subtly reflect the rugged Northwest heritage from which Tollycraft evolved.

## Details of Design

Tollycraft recognized long ago that once their owners were satisfied with a vessel's overall exterior appeal they began to examine the details. Today's

